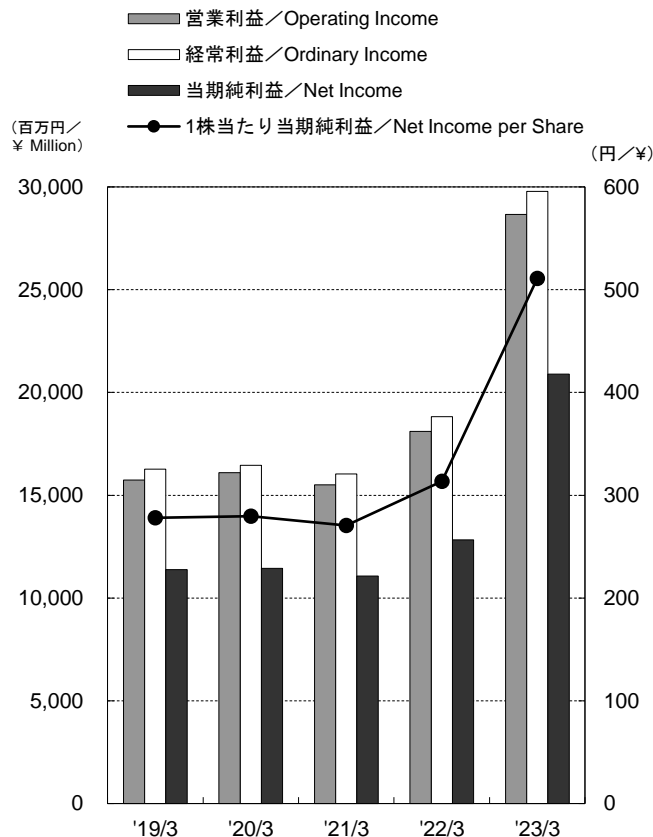
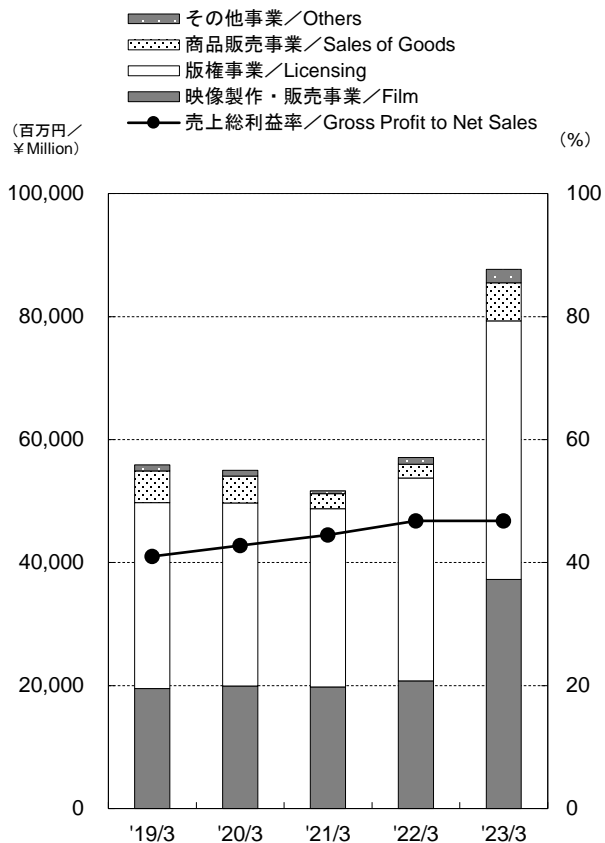


●連結業績推移／Consolidated Operating Results

部門別売上高／売上総利益率
Net Sales/Gross Profit to Net Sales

営業利益／経常利益／当期純利益／
1株当たり当期純利益
Operating Income/Ordinary Income/Net Income/
Net Income per Share



決算期／Fiscal Year Ended	2019/3	2020/3	2021/3	2022/3	2023/3	増減%
売上高／Net Sales	55,701	54,819	51,595	57,020	87,457	53.4
映像製作・販売事業／Film	19,531	19,925	19,766	20,769	37,267	79.4
著作権事業／Licensing	30,210	29,751	28,997	32,995	42,060	27.5
商品販売事業／Sales of Goods	5,166	4,401	2,466	2,231	6,149	175.6
その他事業／Others	970	911	446	1,104	2,216	100.6
セグメント比率(%) [映像/著作権/商品販売/その他] ／Share [Film/Licensing/Sales of Goods/Others]	35/54/9/2	36/54/8/2	38/56/5/1	36/58/4/2	42/48/7/3	-
内部売上消去／Intra-company Sales	177	170	81	80	237	-
売上原価率(%)／Cost of Sales to Net Sales(%)	59.0	57.2	55.5	53.2	53.2	-
売上総利益率(%)／Gross Profit to Net Sales(%)	41.0	42.8	44.5	46.8	46.8	-
営業利益／Operating Income	15,741	16,094	15,503	18,107	28,669	58.3
経常利益／Ordinary Income	16,265	16,455	16,040	18,822	29,791	58.3
当期純利益／Net Income	11,375	11,437	11,067	12,820	20,900	63.0
1株当たり当期純利益(円)／Net Income per Share(¥)	277.95	279.62	270.62	313.46	511.12	63.1



●連結セグメント別業績推移①／Consolidated Results by Segment

映像製作・販売事業

Film

- その他／Others
- 海外映像／Overseas Film
- コンテンツ事業／Contents
- ▨ テレビアニメ／TVs
- 劇場アニメ／Movies

(百万円／
¥Million)

著作権事業

Licensing

- 海外版權／Overseas Licensing
- 国内版權／Domestic Licensing

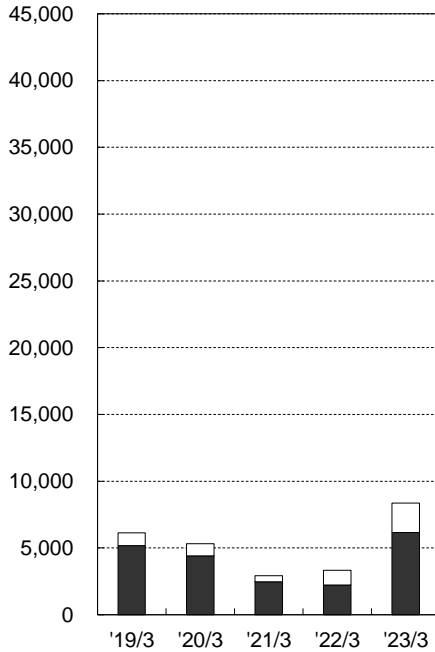
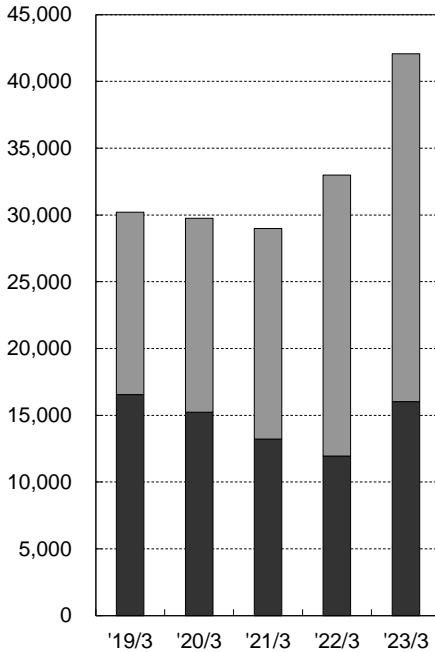
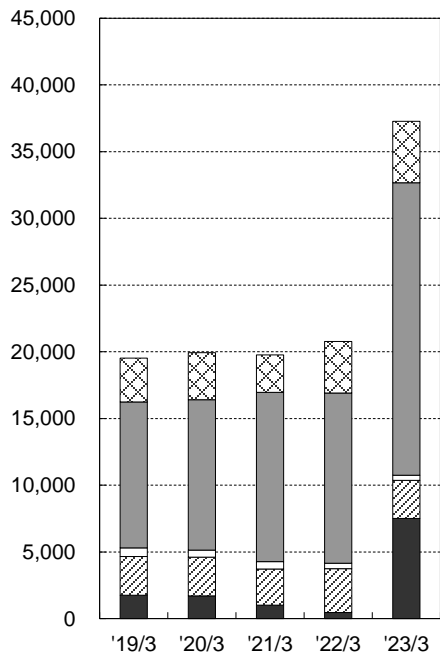
(百万円／
¥Million)

商品販売事業・その他事業

Sales of Goods/Others

- その他／Others
- 商品販売／Sales of Goods

(百万円／
¥Million)

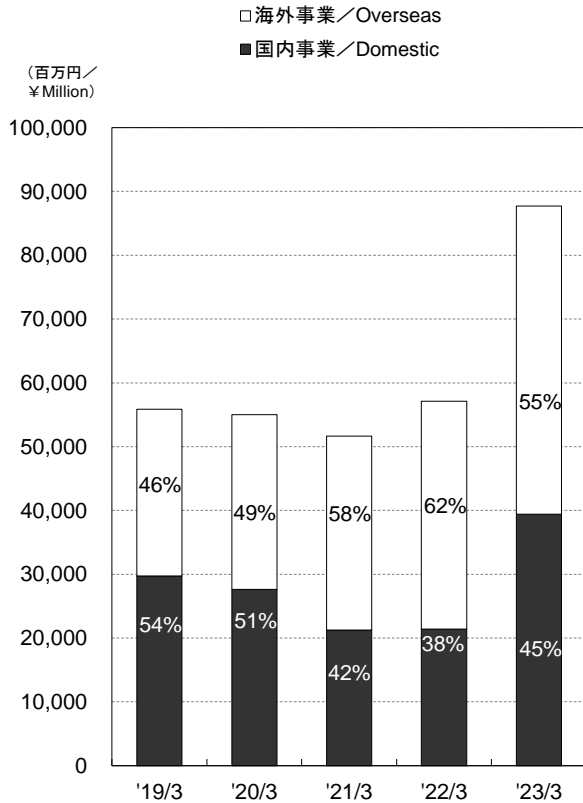


百万円／¥Million

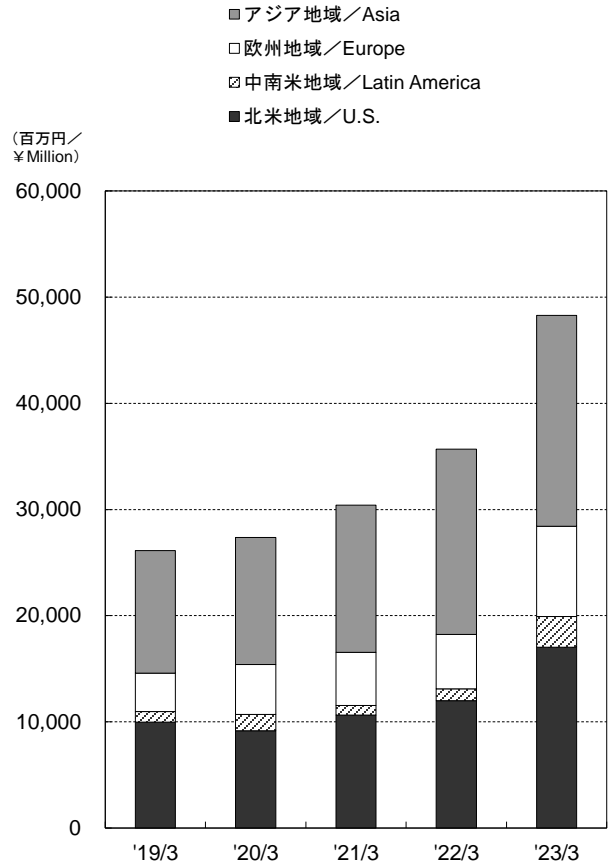
決算期／Fiscal Year Ended	2019/3	2020/3	2021/3	2022/3	2023/3	増減%
売上高／Net Sales	55,701	54,819	51,595	57,020	87,457	53.4
映像製作・販売事業／Film	19,531	19,925	19,766	20,769	37,267	79.4
劇場アニメ／Movies	1,758	1,714	1,010	452	7,500	1,558.5
テレビアニメ／TVs	2,888	2,891	2,720	3,302	2,868	△ 13.2
コンテンツ事業／Contents	660	531	553	402	389	△ 3.2
海外映像／Overseas Film	10,934	11,264	12,664	12,747	21,917	71.9
その他／Others	3,289	3,523	2,815	3,864	4,592	18.8
営業利益／Operating Income	4,147	4,533	4,798	5,753	10,680	85.6
著作権事業／Licensing	30,210	29,751	28,997	32,995	42,060	27.5
国内版權／Domestic Licensing	16,547	15,235	13,207	11,958	16,033	34.1
海外版權／Overseas Licensing	13,662	14,516	15,790	21,037	26,027	23.7
営業利益／Operating Income	14,360	14,503	14,257	15,957	20,945	31.3
商品販売事業／Sales of Goods	5,166	4,401	2,466	2,231	6,149	175.6
営業利益／Operating Income	129	△ 7	△ 183	△ 189	648	-
その他事業／Others	970	911	446	1,104	2,216	100.6
営業利益／Operating Income	△ 42	△ 26	△ 191	△ 253	103	-
内部売上消去／Intra-company Sales	177	170	81	80	237	-

●連結セグメント別業績推移②／Consolidated Results by Segment

国内／海外別売上高
Sales breakdown of Overseas and Domestic



海外事業地域別売上高
Overseas Sales by Region



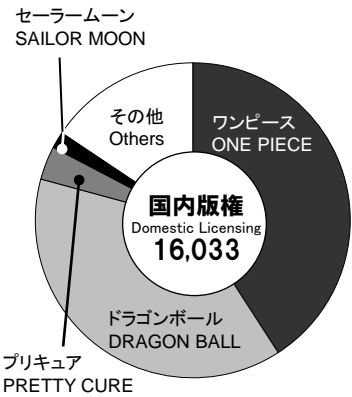
百万円／¥Million

決算期／Fiscal Year Ended	2019/3	2020/3	2021/3	2022/3	2023/3	増減%
売上高／Net Sales	55,701	54,819	51,595	57,020	87,457	53.4
国内事業／Domestic	29,756	27,630	21,254	21,426	39,414	84.0
海外事業／Overseas	26,121	27,359	30,422	35,674	48,279	35.3
北米地域／U.S.	9,970	9,176	10,626	12,008	17,027	41.8
中南米地域／Latin America	988	1,526	927	1,105	2,886	161.2
欧州地域／Europe	3,639	4,708	5,004	5,112	8,502	66.3
アジア地域／Asia	11,522	11,947	13,863	17,448	19,862	13.8
売上高比率(%) (国内/海外) / Share(Domestic/Overseas)	54/46	51/49	42/58	38/62	45/55	-
内部売上消去／Intra-company Sales	177	170	81	80	237	-

●主要セグメント別作品内訳／Consolidated Sales of Major Titles by Segment

国内版権 売上上位4作品／Domestic Licensing Top 4 百万円／¥Million

2019/3	2020/3	2021/3	2022/3	2023/3
全体／total 16,547	15,235	13,207	11,958	16,033
ドラゴンボール DRAGON BALL 8,548	ドラゴンボール DRAGON BALL 7,656	ドラゴンボール DRAGON BALL 6,479	ドラゴンボール DRAGON BALL 5,487	ワンピース ONE PIECE 6,553
ワンピース ONE PIECE 3,211	ワンピース ONE PIECE 3,836	ワンピース ONE PIECE 3,409	ワンピース ONE PIECE 3,496	ドラゴンボール DRAGON BALL 6,149
プリキュア PRETTY CURE 907	プリキュア PRETTY CURE 801	プリキュア PRETTY CURE 635	プリキュア PRETTY CURE 528	プリキュア PRETTY CURE 553
セーラーMoon SAILOR MOON 516	聖闘士星矢 SAINT SEIYA 382	セーラーMoon SAILOR MOON 390	セーラーMoon SAILOR MOON 257	セーラーMoon SAILOR MOON 273



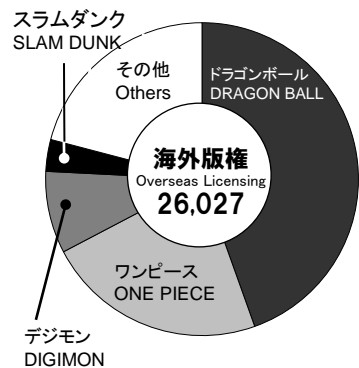
海外映像 売上上位4作品／Overseas Film Top 4 百万円／¥Million

2019/3	2020/3	2021/3	2022/3	2023/3
全体／total 10,934	11,264	12,664	12,747	21,917
ドラゴンボール DRAGON BALL 3,518	ドラゴンボール DRAGON BALL 3,451	ワンピース ONE PIECE 3,478	ワンピース ONE PIECE 4,184	ワンピース ONE PIECE 7,234
ワンピース ONE PIECE 2,676	ワンピース ONE PIECE 3,042	ドラゴンボール DRAGON BALL 2,847	ドラゴンボール DRAGON BALL 2,474	ドラゴンボール DRAGON BALL 5,403
プリキュア PRETTY CURE 569	プリキュア PRETTY CURE 684	プリキュア PRETTY CURE 711	聖闘士星矢 SAINT SEIYA 844	聖闘士星矢 SAINT SEIYA 1,474
聖闘士星矢 SAINT SEIYA 371	聖闘士星矢 SAINT SEIYA 422	デジモン DIGIMON 596	プリキュア PRETTY CURE 715	スラムダンク SLAM DUNK 1,063



海外版権 売上上位4作品／Overseas Licensing Top 4 百万円／¥Million

2019/3	2020/3	2021/3	2022/3	2023/3
全体／total 13,662	14,516	15,790	21,037	26,027
ドラゴンボール DRAGON BALL 7,876	ドラゴンボール DRAGON BALL 8,763	ドラゴンボール DRAGON BALL 7,751	ドラゴンボール DRAGON BALL 9,328	ドラゴンボール DRAGON BALL 11,590
ワンピース ONE PIECE 2,806	ワンピース ONE PIECE 2,723	ワンピース ONE PIECE 2,481	ワンピース ONE PIECE 4,394	ワンピース ONE PIECE 5,930
聖闘士星矢 SAINT SEIYA 675	聖闘士星矢 SAINT SEIYA 731	スラムダンク SLAM DUNK 2,316	スラムダンク SLAM DUNK 1,673	デジモン DIGIMON 2,208
セーラーMoon SAILOR MOON 333	デジモン DIGIMON 341	聖闘士星矢 SAINT SEIYA 717	デジモン DIGIMON 1,532	スラムダンク SLAM DUNK 855



注: 海外子会社は、12月31日が決算日となっており、連結決算日との間に生じた重要な取引については、調整を行っております。

Notes: Because the fiscal year of the overseas subsidiaries ends Dec. 31, appropriate adjustments are made concerning to important business deals occurred till the closing date of the parent company.

●収益性／Profitability

売上高営業利益率／経常利益率／当期純利益率

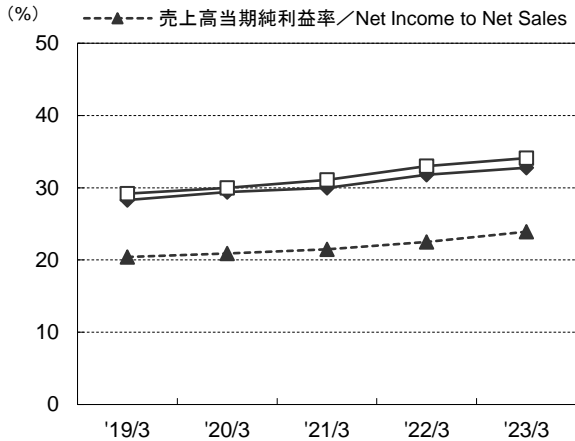
Operating Income to Net Sales/

Ordinary Income to Net Sales/Net Income to Net Sales

◆ 売上高営業利益率／Operating Income to Net Sales

□ 売上高経常利益率／Ordinary Income to Net Sales

▲ 売上高当期純利益率／Net Income to Net Sales

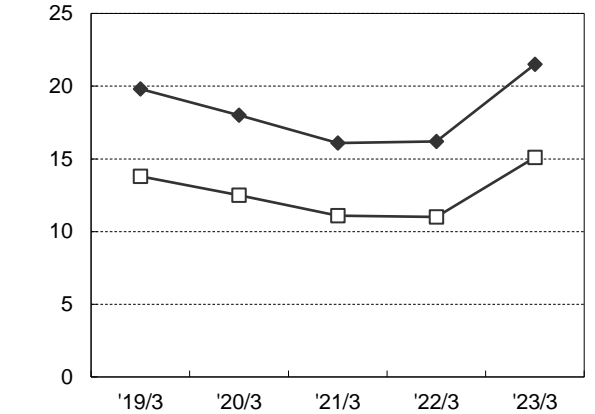


使用総資産経常利益率／当期純利益率

Ordinary Income to Total Assets/Net Income to Total Assets

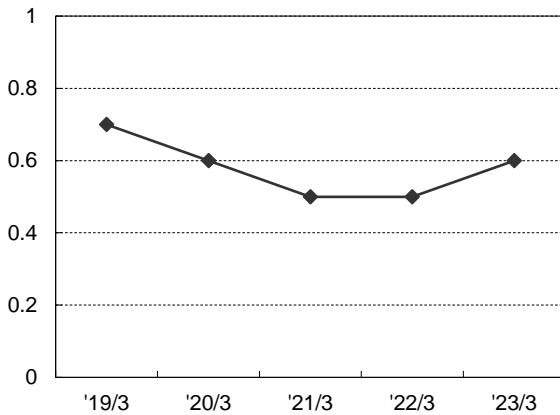
◆ 使用総資産経常利益率／Ordinary Income to Total Assets

□ 使用総資産当期純利益率／Net Income to Total Assets



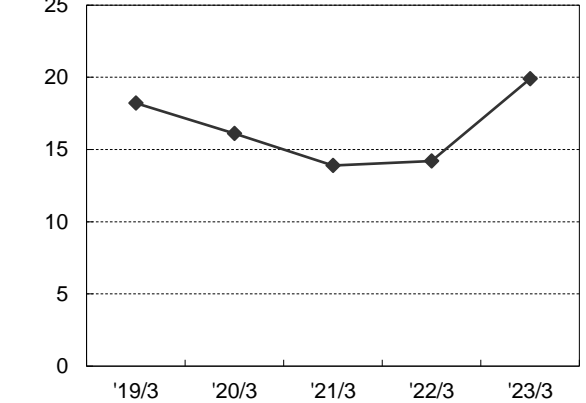
総資産回転率(回) Total Assets Turnover (Times)

(回/Times)



自己資本当期純利益率 Return on Equity

(%)

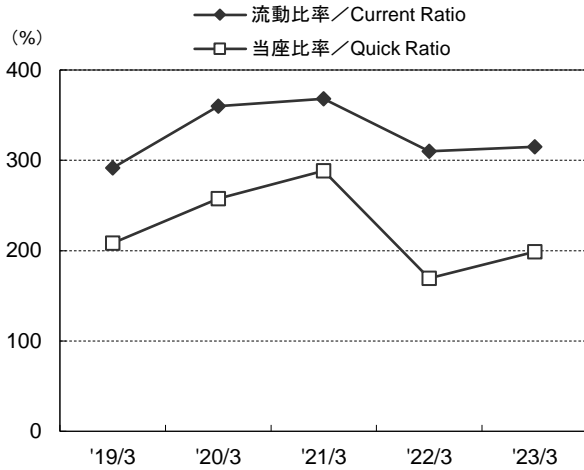


決算期／Fiscal Year Ended	2019/3	2020/3	2021/3	2022/3	2023/3
売上高営業利益率／Operating Income to Net Sales	28.3	29.4	30.0	31.8	32.8
売上高経常利益率／Ordinary Income to Net Sales	29.2	30.0	31.1	33.0	34.1
売上高当期純利益率／Net Income to Net Sales	20.4	20.9	21.5	22.5	23.9
使用総資産経常利益率／Ordinary Income to Total Assets	19.8	18.0	16.1	16.2	21.5
使用総資産当期純利益率／Net Income to Total Assets	13.8	12.5	11.1	11.0	15.1
総資産回転率(回)／Total Assets Turnover (Times)	0.7	0.6	0.5	0.5	0.6
自己資本当期純利益率／Return on Equity	18.2	16.1	13.9	14.2	19.9

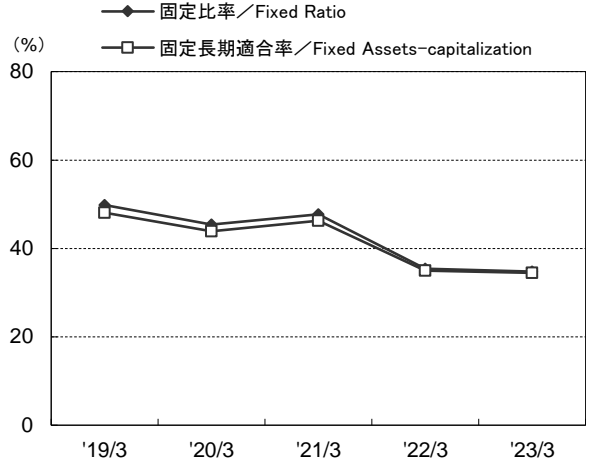
注: 使用総資産経常利益率=経常利益／総資産(期中平均)×100
 使用総資産当期純利益率=当期純利益／総資産(期中平均)×100
 総資産回転率=売上高／総資産(期中平均)
 自己資本当期純利益率=当期純利益／自己資本(期中平均)×100

Notes: Ordinary Income to Total Assets=Ordinary Income/Total Assets (Yearly Average) × 100
 Net Income to Total Assets=Net Income/Total Assets (Yearly Average) × 100
 Total Assets Turnover=Net Sales/Total Assets (Yearly Average)
 Return on Equity=Net Income/Shareholder's Equity (Yearly Average) × 100

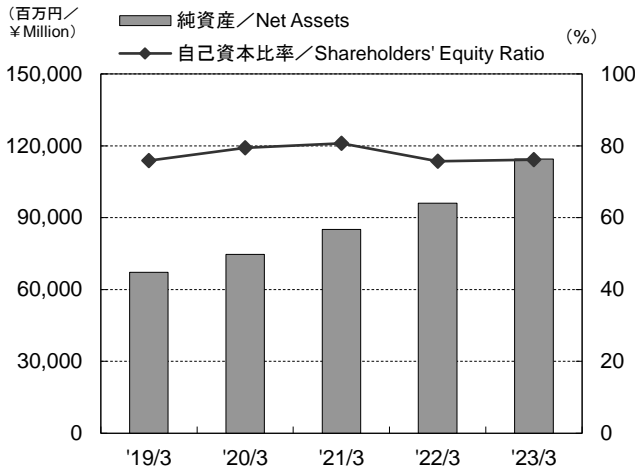
流動比率／当座比率
Current Ratio/Quick Ratio



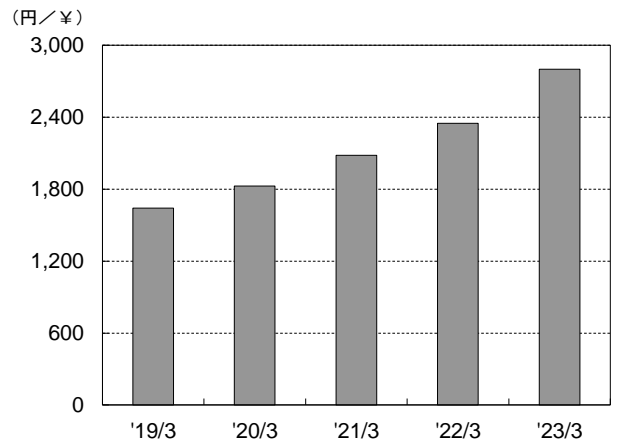
固定比率／固定長期適合率
Fixed Ratio/Fixed Assets-capitalization



純資産／自己資本比率
Net Assets/Shareholders' Equity Ratio



1株当たり純資産
Net Assets per Share

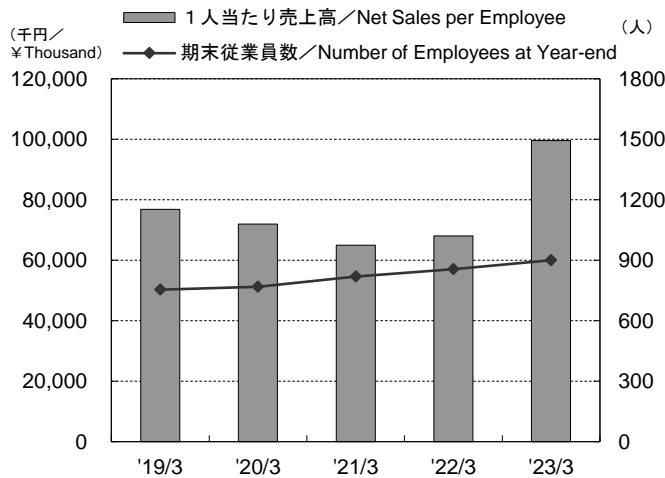


決算期／Fiscal Year Ended	2019/3	2020/3	2021/3	2022/3	2023/3
流動比率／Current Ratio	291.5	359.7	367.9	310.1	314.9
当座比率／Quick Ratio	208.5	257.7	288.5	169.4	198.7
固定比率／Fixed Ratio	49.8	45.4	47.7	35.4	34.8
固定長期適合率／Fixed Assets-capitalization	48.1	43.9	46.3	35.0	34.5
純資産(百万円)／Net Assets (¥ Million)	67,204	74,692	85,120	96,044	114,502
1株当たり純資産(円)／Net Assets per Share (¥)	1,642.09	1,826.50	2,081.26	2,348.35	2,800.43
自己資本比率／Shareholders' Equity Ratio	75.9	79.4	80.7	75.7	76.1

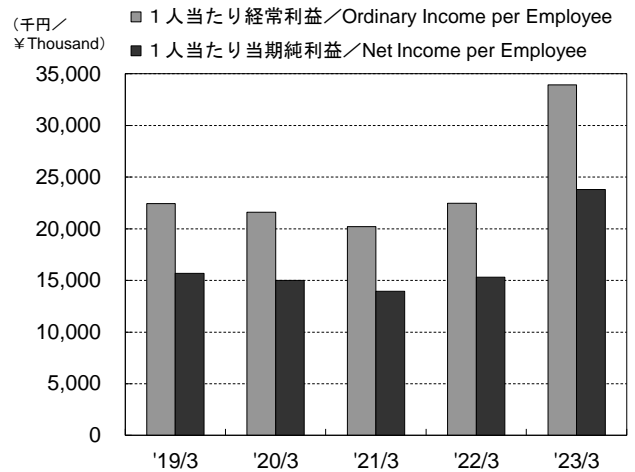
注： 流動比率＝流動資産(期末)／流動負債(期末)×100 当座比率＝(現金及び預金(期末)＋売上債権(期末)＋有価証券(期末))／流動負債(期末)×100
 固定比率＝固定資産(期末)／純資産(期末)×100 固定長期適合率＝固定資産(期末)／(純資産(期末)＋固定負債(期末))×100
 Notes: Current Ratio=Current Assets (Fiscal Year-end)/Current Liabilities (Fiscal Year-end)×100
 Quick Ratio=(Cash and Time Deposits (Fiscal Year-end) +Accounts Receivable (Fiscal Year-end) +Securities (Fiscal Year-end))/Current Liabilities (Fiscal Year-end)×100
 Fixed Ratio=Fixed Assets (Fiscal Year-end)/Net Assets×100
 Fixed Assets-capitalization=Fixed Assets (Fiscal Year-end)/(Net Assets (Fiscal Year-end) +Long-term Liabilities (Fiscal Year-end))×100

●効率性／Efficiency

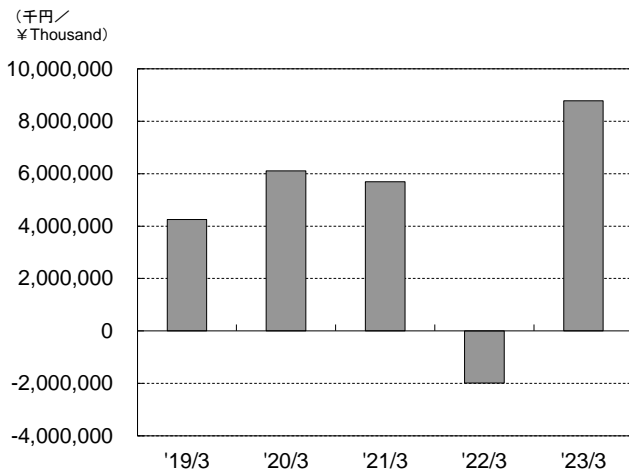
1人当たり売上高／期末従業員数
Net Sales per Employee/Number of Employees at Year-end



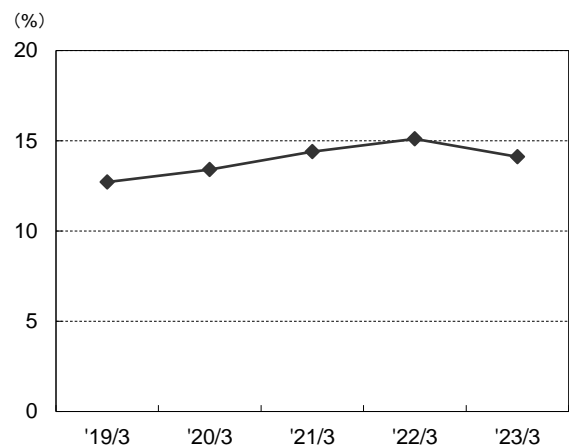
1人当たり経常利益／当期純利益
Ordinary Income per Employee/Net Income per Employee



キャッシュ・フロー
Cash Flows



売上高販管費率
Selling, General and Administrative Expenses to Net Sales



千円/¥Thousand

決算期／Fiscal Year Ended	2019/3	2020/3	2021/3	2022/3	2023/3
1人当たり売上高／Net Sales per Employee	76,829	71,941	64,982	68,084	99,609
期末従業員数(名)／Number of Employees at Year-end	755	769	819	856	900
1人当たり経常利益／Ordinary Income per Employee	22,435	21,595	20,202	22,474	33,931
1人当たり当期純利益／Net Income per Employee	15,690	15,010	13,939	15,307	23,804
減価償却費／Depreciation and Amortization	752,382	696,912	601,885	602,849	603,426
キャッシュ・フロー／Cash Flows	4,249,408	6,109,481	5,690,056	△1,981,441	8,781,818
期末発行済株式数(株)／Number of Shares Outstanding	40,925,835	40,894,010	40,898,723	40,898,651	40,887,650
売上高販管費率(%)／SG&A Expenses to Net Sales (%)	12.7	13.4	14.4	15.1	14.1

注： 従業員1人当たり指標は、期中平均従業員数に基づいて算出しています。
Notes: Per Employee Data are based on the yearly average number of employees.

●連結貸借対照表／Consolidated Balance Sheets

百万円／¥Million

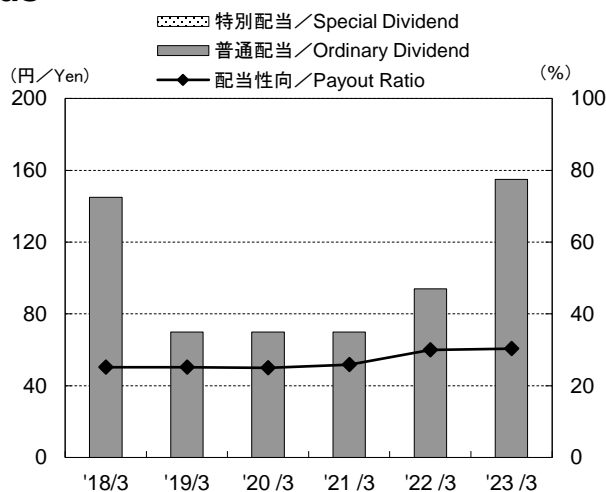
決算期／Fiscal Year Ended	2019/3	2020/3	2021/3	2022/3	2023/3	増減
【資産の部】／Assets						
流動資産／Current Assets	55,015	60,081	64,834	92,929	110,702	17,772
現金及び預金／Cash and Time Deposits	34,454	39,984	43,041	60,149	66,909	6,759
受取手形及び売掛金／Notes Receivable and Accounts Receivable	13,083	10,622	12,790	14,659	24,975	10,316
製作品／Finished Products	36	90	60	74	3,716	3,642
商品／Merchandise	240	241	269	336	1,095	758
仕掛品／Work in Progress	3,248	5,414	7,507	12,816	8,417	△4,398
原材料及び貯蔵品／Raw Materials and Supplies	69	90	88	86	107	21
関係会社短期貸付金／Short-term Loans receivable from subsidiaries and affiliates	3,000	3,053	54	3,059	3,187	127
その他／Other	965	663	1,053	1,778	2,315	537
貸倒引当金／Allowance for Doubtful Accounts	△82	△77	△30	△29	△21	7
固定資産／Fixed Assets	33,476	33,937	40,643	33,953	39,806	5,852
有形固定資産／Tangible Fixed Assets	9,224	8,935	8,582	8,516	8,392	△123
建物及び構築物(純額)／Buildings and Structures, Net	7,144	6,983	6,761	6,570	6,581	11
土地／Land	1,315	1,315	1,315	1,315	1,315	-
建設仮勘定／Construction in Progress	1	0	-	125	6	△119
その他／Other	763	635	505	504	489	△15
無形固定資産／Intangible Fixed Assets	466	454	527	633	1,184	550
投資その他の資産／Investments and Other Assets	23,785	24,547	31,533	24,803	30,229	5,426
投資有価証券／Investment Securities	12,048	12,258	13,706	12,715	12,522	△193
関係会社長期貸付金／Long-term Loans receivable from subsidiaries and affiliates	3,000	3,024	6,018	3,012	3,006	△6
長期預金／Long-term Deposits	7,500	7,500	10,500	7,500	13,000	5,500
その他／Other	1,275	1,801	1,346	1,610	1,704	94
貸倒引当金／Allowance for Doubtful Accounts	△37	△37	△37	△34	△2	31
資産合計／Total Assets	88,491	94,019	105,477	126,883	150,508	23,625
【負債の部】／Liabilities						
流動負債／Current Liabilities	18,871	16,701	17,623	29,966	35,150	5,183
支払手形及び買掛金／Notes Payable and Accounts Payable-trade	11,525	9,663	11,015	20,007	22,763	2,756
未払法人税等／Accrued Income Taxes	3,193	2,798	2,820	2,926	5,334	2,407
賞与引当金／Allowance for Employees' Bonuses	332	411	439	461	547	85
その他／Other	3,820	3,828	3,347	6,571	6,505	△65
固定負債／Fixed Liabilities	2,416	2,624	2,733	871	855	△16
役員退職慰勞引当金／Accrued Pension and Severance Costs	173	-	-	-	-	-
役員株式給付引当金／Provision for share-based remuneration for directors	-	49	63	100	158	58
退職給付に係る負債／Net Defined Benefit Liability	2,037	2,086	2,130	137	225	87
その他／Other	205	488	539	633	472	△161
負債合計／Total Liabilities	21,287	19,326	20,356	30,838	36,006	5,167
【純資産の部】／Net Assets						
株主資本／Shareholders' Equity	65,246	73,669	81,894	91,849	108,768	16,919
資本金／Common Stock	2,867	2,867	2,867	2,867	2,867	-
資本剰余金／Capital Surplus	3,409	3,409	3,409	3,409	3,409	-
利益剰余金／Retained Earnings	59,514	68,087	76,290	86,245	103,298	17,053
自己株式／Treasury Stock	△544	△694	△672	△673	△807	△133
その他の包括利益累計額／Accumulated other comprehensive Income	1,957	1,023	3,226	4,195	5,734	1,538
純資産合計／Total Net Assets	67,204	74,692	85,120	96,044	114,502	18,458
負債純資産合計／Total Liabilities and Net Assets	88,491	94,019	105,477	126,883	150,508	23,625

●連結損益計算書／Consolidated Statements of Income

百万円／¥Million

決算期／Fiscal Year Ended	2019/3	2020/3	2021/3	2022/3	2023/3	増減
売上高／Net Sales	55,701	54,819	51,595	57,020	87,457	30,436
売上原価／Cost of Sales	32,862	31,358	28,655	30,327	46,490	16,163
売上総利益／Gross Profit	22,838	23,461	22,939	26,693	40,966	14,272
販売費及び一般管理費／Selling, General and Administrative Expenses	7,097	7,367	7,436	8,585	12,296	3,710
営業利益／Operating Income	15,741	16,094	15,503	18,107	28,669	10,562
営業外収益／Non-operating Income	552	509	809	859	1,650	790
営業外費用／Non-operating Expenses	28	147	271	144	528	383
経常利益／Ordinary Income	16,265	16,455	16,040	18,822	29,791	10,969
特別利益／Extraordinary Gains	29	2	-	1	-	△1
特別損失／Extraordinary Losses	197	31	46	204	-	△204
税金等調整前当期純利益／Income before Income Taxes	16,097	16,426	15,994	18,619	29,791	11,172
法人税、住民税及び事業税／Income Taxes, Inhabitant Taxes and Enterprise Taxes	4,854	5,047	5,009	5,672	8,995	3,323
法人税等調整額／Income Taxes Adjustment	△132	△58	△83	126	△103	△230
当期純利益／Net Income	11,375	11,437	11,067	12,820	20,900	8,080
親会社株主に帰属する当期純利益／Net Income Attributable to Owners of Parent	11,375	11,437	11,067	12,820	20,900	8,080

●配当の状況／Dividends



円／¥

決算期／Fiscal Year Ended	2018/3	2019/3	2020/3	2021/3	2022/3	2023/3
1株当たり配当金／Dividends per Share	145.00 (48.33)	70.00	70.00	70.00	94.00	155.00
普通配当／Ordinary Dividend	145.00	70.00	70.00	70.00	94.00	155.00
特別配当／Special Dividend	-	-	-	-	-	-
配当金総額(百万円)／Total Dividend (¥ Million)	1,994	2,888	2,888	2,888	3,878	6,395
配当性向(%)／Payout Ratio (%)	25.2	25.2	25.0	25.9	30.0	30.3
純資産配当率(%)／Dividend on Equity Ratio (%)	3.6	4.6	4.0	3.6	4.2	6.0

注： 当社は2018年4月1日付けで株式分割をしております。2018年3月期の配当金額は、実際の配当金額と()内に各期首に株式分割をしたと仮定して計算した配当金額を記載しております。

Notes: The company conducted a share split on April 1, 2018. The dividend prior to the fiscal year ending March 2018 was calculated based on the assumption that shares are split at the beginning of each term, as described in parenthesis, in addition to the actual dividend.



TOEI ANIMATION
Since 1956